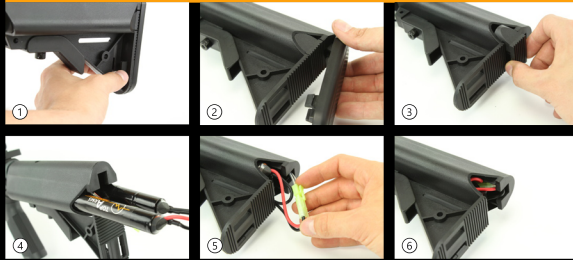


QUICK START GUIDE

HOW TO PLUG THE BATTERY



Press both sides retaining pads (fig. 1) and pull rubber pad out (fig. 2). Pull out battery cover (fig. 3). Remove connector out of the stock and insert proper battery in the stock storage space. Each part of the battery on one side of the stock (fig. 4). Use Mini CQB battery type. We recommend 8,4V or 9,6V TopArms batteries (product codes 5176 and 5177).

For easier battery insert, extend the stock to the second position (see "How to adjust the stock" in this guide). Fully connect battery into connector (fig. 5) and push overlapping wiring into stock tube (fig. 6). Reinstall battery cover. Slide and snap the rubber cover on the stock.

HOW TO PLUG THE BATTERY VLTOR



Remove the rubber pad by pulling the pad down (fig. 1). Tilt the fuse at the bottom of the stock (fig. 2). Press the stock release lever (fig. 3). This press releases the battery side covers - remove them and slide the stock into the maximum position (fig. 4). Insert one part of the Mini CQB battery through the hole in stock. We recommend 8,4V or 9,6V TopArms batteries (product codes 5176 and 5177).

Connect the battery connector. Attach the battery side covers, press and release the stock release lever to secure the side covers of the batteries. Squeeze the fuse to secure the side of the batteries (fig. 2). Slide the rubber cover on the stock.

HOW TO ADJUST THE STOCK



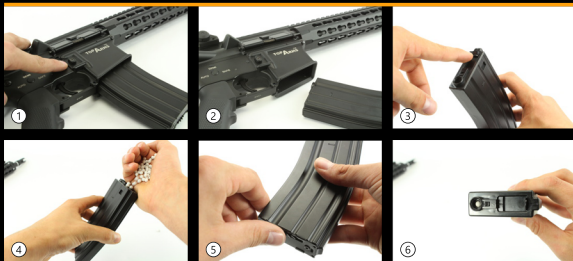
To adjust the length of the stock, push the stock release lever. Keep the release lever pressed and pull the desired length of the stock (fig. 1). The stock has several possible positions. When the stock has been pulled out to the desired length, release the lever (fig. 2). You can identify the correct locking according by an audible "click" of the locking pin.

CHANGING SHOOTING MODE



As a real firearm, this airsoft replica is equipped with a fully functional selector switch. It can be rotated to the three modes: "SAFE" means a locked trigger (fig. 1). The "SEMI" mode allows single shot firing. 1 trigger press = 1 shot (fig. 2). In "AUTO" mode, the gun will fire continual burst when trigger is pressed and hold (fig. 3). The length of the burst fire depends on the time the trigger is pressed.

HOW TO LOAD THE MAGAZINE



To remove magazine from the gun, press magazine release button (fig. 1-2). Open magazine hatch cover on the top (fig. 3). Fill inner storage with the airsoft BBs (do not overfill) and close the hatch cover (fig. 4). Turn the gear wheel at the bottom of the magazine (fig. 5). Stop as soon as you hear the click of the mechanism or after approx. 30-60sec. Insert the magazine into the gun - you will hear the click of the magazine release lock. Turn with the gear wheel again after about 50 shots. After firing, remove the magazine, empty it and release the spring with the slide rib on the top of the magazine (fig. 6).

We recommend TopArms magazines with which you have guaranteed compatibility and reliability (product codes 4413, 4414, 4415, 4452 and 4825).

HOW TO SET THE HOP-UP



Hop-up system is a bullet-rotation system that increases accuracy and range. Gently pull the charging handle for its adjustment (fig. 1). This opens the dust cover and shaft that allow access to the hop-up chamber. Turning the knob adjusts the rotation rate of the ball and thus its travel - buoyancy (fig. 2). The optimal trajectory of the ball is a slight ball-uplift (fig. 3). This ensures the maximum range. Always set the hop-up from the fully released position (turning it clockwise to tighten). Too tightened hop-up can cause BBs jam in the weapon and severely damaged. After setting the hop-up, close the shaft by pressing the shutter catch on the left side of the gun above the trigger (fig. 4-5) and close the dust cover (fig. 6).

HOW TO USE R.I.S. RAIL



R.I.S. rail is a universal way of mounting additional accessory.
Your weapon can be enhanced by riflescopes, red dot sights, additional sights, tactical lights, battery boxes and other accessories.

HOW TO SET THE SIGHT



Gently pull the sights into the vertical position. To adjust the sight, use two dial wheel on the rear sight. The side dial wheel allows lateral sight correction and the dial wheel located directly on the rear sight allows height correction. Some models have fixed or other type of sight than shown.

QUICK START GUIDE

SAFETY INSTRUCTIONS

Airsoft weapons are not toys and do not belong to children! Only for persons over 18 years of age.

Be careful during product unpacking to prevent it from falling and avoiding damage to property or health. Some components could be released during shipping manipulation. Keep original packaging. It is designed for safe transport and storage of the replica.

The replica is designed for hobby target shooting in outdoor areas.

Use safety goggles, which meet current safety standards - we recommend certified TopArms goggles.

We recommend using only high quality and branded ammunition (BBs).

Never use already shot BBs. They can be deformed and cause jamming or damage.

Jams can be also caused by poor quality, badly cast or dirty bullets.

Never shoot without a BBs - blank firing. The exception is only a so-called "shot of confidence" to verify that a BB is not left in the chamber after the magazine has been removed. Blank fire damages the replica and can lead to breakage of the gear mechanism.

It is forbidden to present this replica as a real firearms, especially in connection with a second person's threat.

It is forbidden to present or wear the replica in public places.

Do not aim at people, animals or fragile objects. Pay attention to the reflected BBs.

Do not shoot in confined spaces. There is a risk of property damage or injury.

Do not leave the replica unattended and within reach of children.

Do not load the magazine spring over its limits. Spring breaks or other damage to the mechanism can easily occur. Stop winding as soon as you hear the click of the mechanism.

Do not use the replica at temperatures below +15 °C and above +30 °C. There is a high risk of brittle fractures of stressed materials.

Protect from heat sources - heaters, spotlights, fire, direct sunlight, high humidity, water or aggressive substances and dust.

Disassembling, modification or other weapon interference is strictly forbidden (except for regular maintenance).

Service this replica only in authorized workshops. Unprofessional touch may cause serious damage or injury to users or third parties.

Shoot without violent movements that could force a replica.

Avoid getting dust and dirt into the replica or magazine mechanism.

At the end of the shooting, remove the magazine from the gun and empty the remaining bullets from the HopUp chamber. Turn-off hop-up. Shoot 3 to 5 rounds in a SEMI mode to release the spring while firing the last BB that could remain in the barrel. Disconnect the battery and empty the magazine.

Importer is not liable of the property damage or injury caused by non-compliance with the safety instructions above. In such cases, the warranty is invalid.

MAINTENANCE

Electric replicas require only basic easy maintenance. In particular, it is advisable to clean the barrel.

In the event of dust, the product can be wiped gently with a damp cloth moistened with water and then wiped dry.

Only silicone oil can be used to lubricate the gun and magazine.

Never use aggressive substances for rubber, plastic and light metal alloys.

If the HopUp system is set too hard, the BB may jam in the chamber. In this case, stop shooting immediately, set HopUp to minimum and try to shoot one shot. If the BB is still stuck in the barrel, use the cleaning rod (not included) and push the BB out from the barrel end. Preventing jamming of BB in the barrel can be sprayed with a small amount of silicone oil into the gun chamber shaft. After this application of silicone oil, short-term malfunction of the HopUp function occurs. Damage to the internal mechanism due to excessive setting of HopUp system is among the most common faults!

If the replica is not working on a SEMI mode, switch selector to a AUTO mode, shoot approx. 5 BBs and then switch back to SEMI mode.

Do not shoot for long time in AUTO mode. After approx. 200 shots let the replica rest for 5-10 minutes.

HOW TO VERIFY THE AUTHENTICITY



Because of distinction between the original E&C distribution and non-branded copies has each E&C replica of the official AirsoftPro distribution a unique serial number on the trigger guard. You can simply verify the authenticity of the replica at www.airsoftpro.com/original-ec or just simply scan the QR code by your phone / tablet. Another designation of the authenticity is the hologram "AirsoftPro Official Distribution" on the body of the replica and the seal "AirsoftPro Warranty" located on the mechbox. The seal is visible after removing the magazine at the bottom of the magazine shaft. This markings are a guarantee of the originality - you get the quality of the original with great reliability and minimal defect.

